

General Specifications:

Total Fixture Output: 6.5 klm

Light Engine Output: 15 klm

Efficacy: 13 Lumen/Watt

Lens Option: N/A

Zoomrange: 12-36°

CRI: 80+

CQS: 85+

TM-30 Rf: 80+

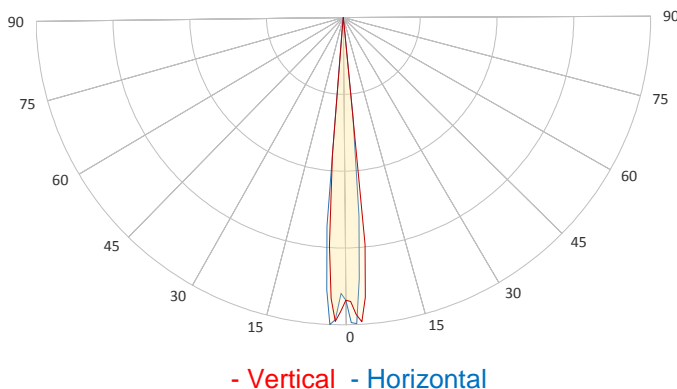
TM-30 Rg: 105+

TLCI: 80+

Color Temperature: 6500 K



Measurement



Catalog Number: 90250005HU

Measured Output: 5591 lm

Measured Peak: 231407 cd

Consumed Power: 430 W

Efficacy: 13.0 Lumen/Watt

Beam Angle (50%): 10°

Field Angle (10%): 11.7°

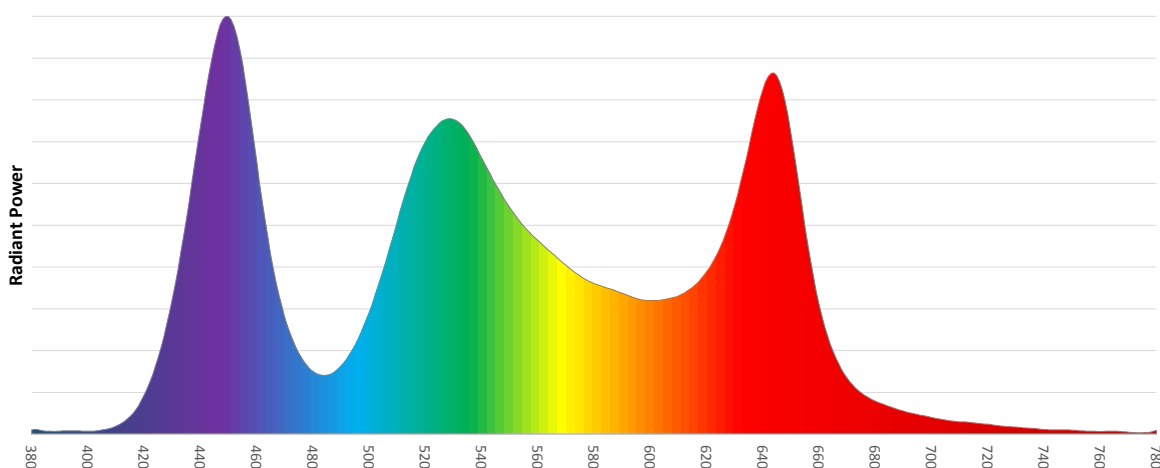
Cutoff Angle (3%): 12.2°

Measurement Condition:

Ambient Temperature: 25 +/- 5C

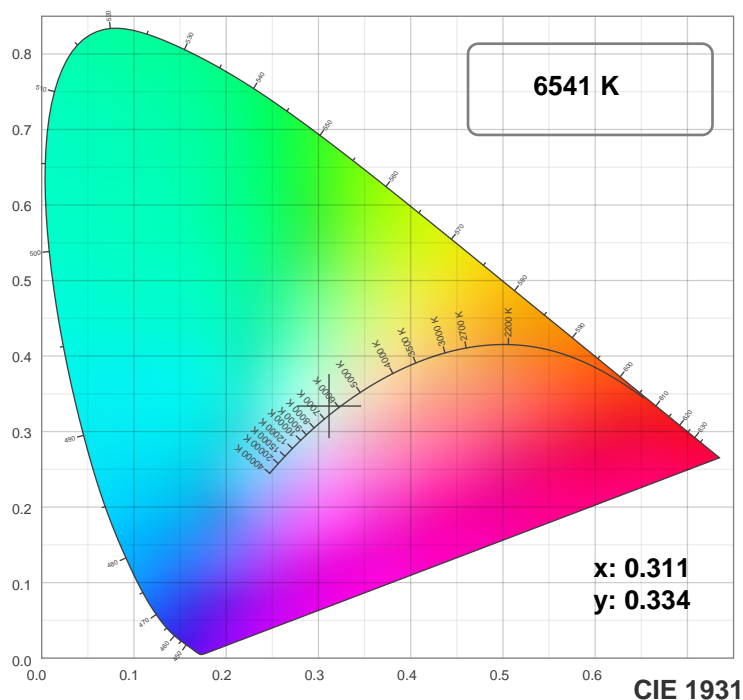
AC Supply: 230V/50Hz

Spectral distribution

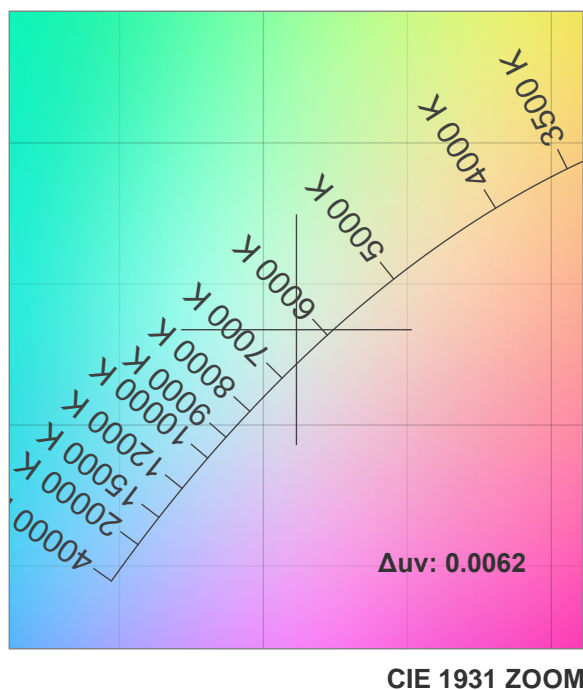
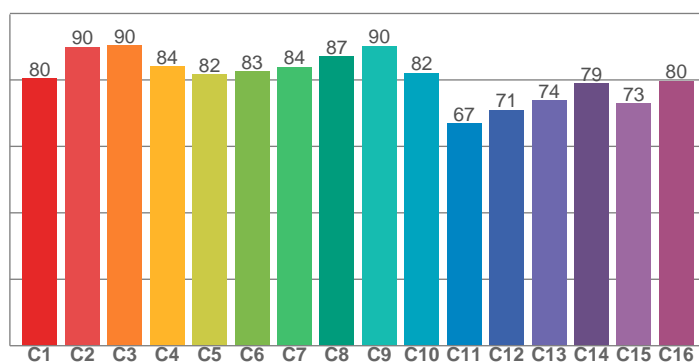


Chromaticity

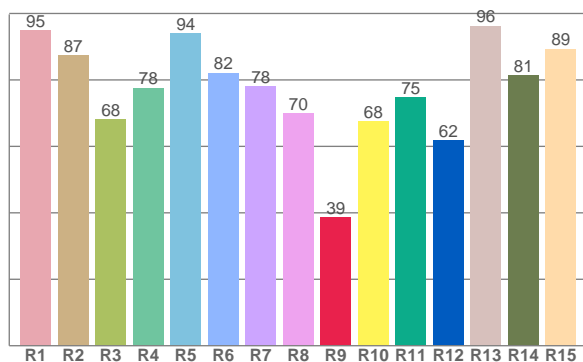
MAC Allure Profile – Narrow



TM30: 81.5



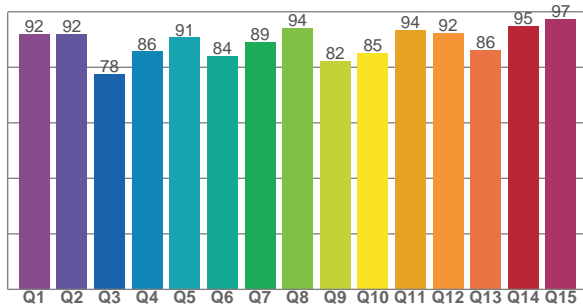
CRI: 81.5 (R1-R8)



Color Parameters

Color Temperature	Color Rendering Index	Red Component	Color Fidelity	Color Gamut
CCT	CRI	CRI R9	TM30 Rf	TM30 Rg
6541 K	81.5	38.7	81.5	108.6

CQS: 87.9



Television Lighting Consistency Index	Color Quality Scale	Color Coordinate CIE 1931	Color Coordinate CIE 1931	Color Coordinate CIE 1964	Color Coordinate CIE 1964	Color Diviation from Black Body
TLCI	CQS	x	y	u	v	Δuv
80+	87.9	0.311	0.334	0.195	0.314	0.0062

TM30 MAC Allure Profile – Narrow

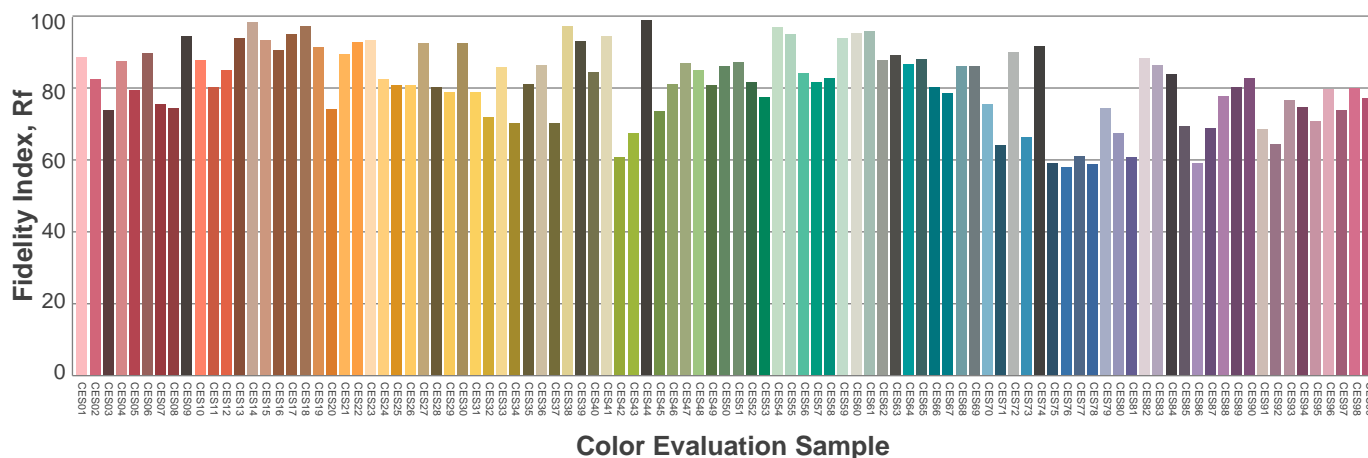
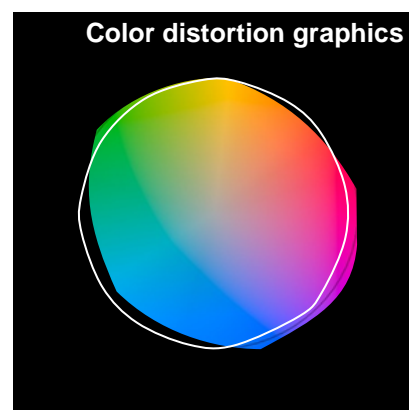
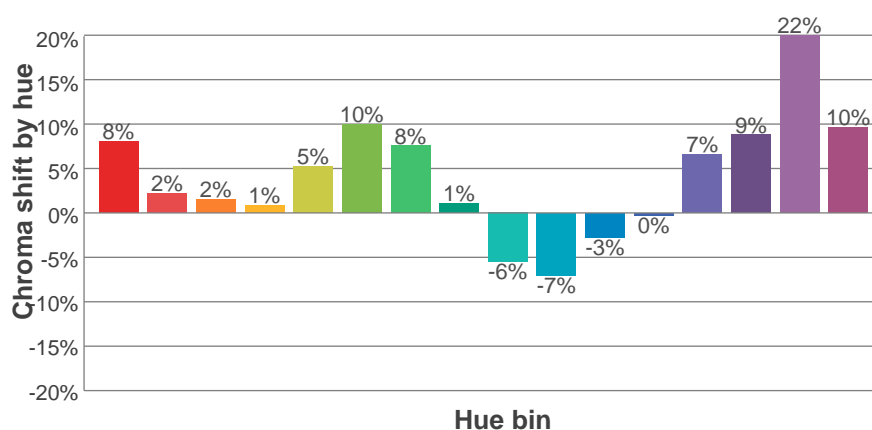
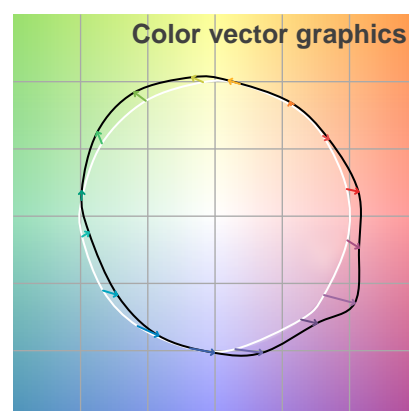
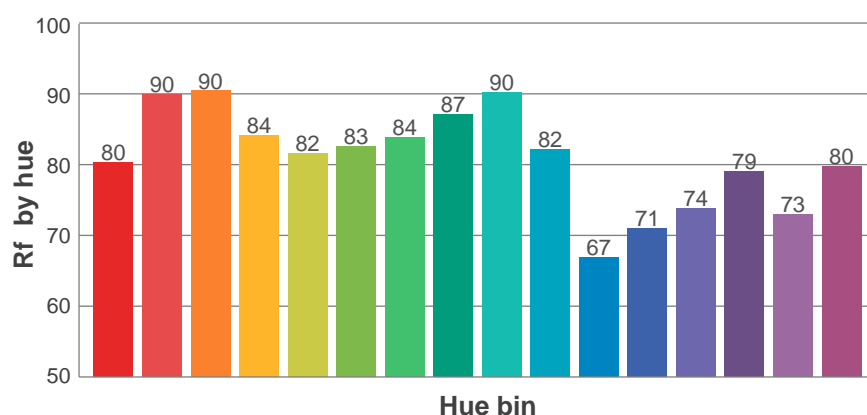
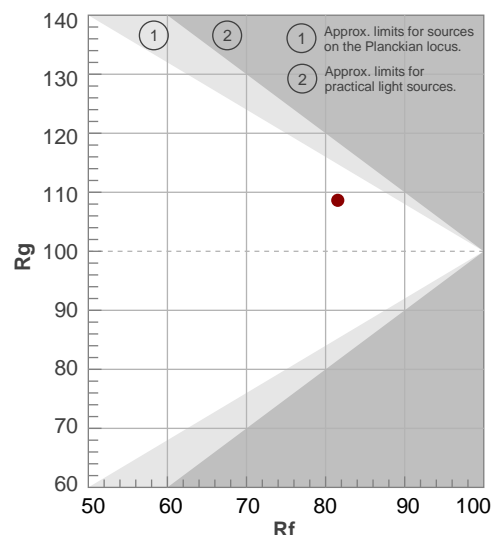
Rf 81.5

Fidelity index Rf

Rg 108.6

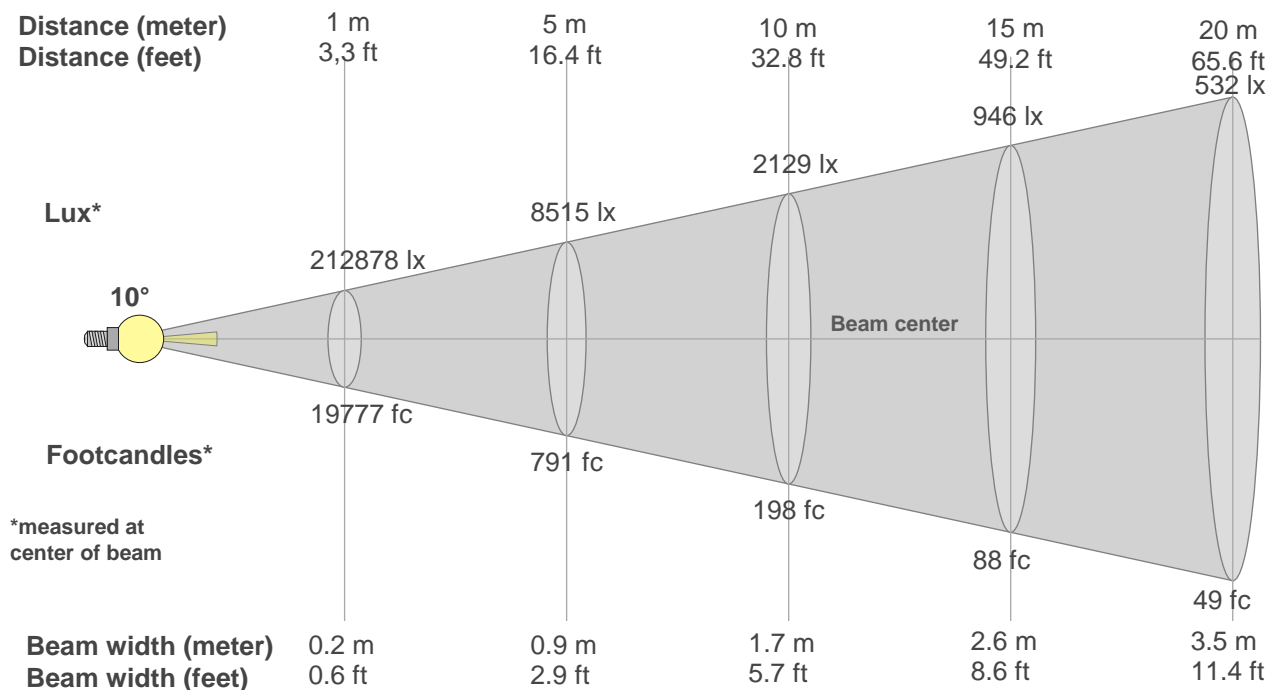
Gamut index Rg

Hue Bin	R _f	Graphic shifts (%)	
		Chroma	Hue
1	80	8%	-4%
2	90	2%	-4%
3	90	2%	2%
4	84	1%	9%
5	82	5%	7%
6	83	10%	4%
7	84	8%	-5%
8	87	1%	-6%
9	90	-6%	-2%
10	82	-7%	9%
11	67	-3%	17%
12	71	0%	18%
13	74	7%	19%
14	79	9%	8%
15	73	22%	8%
16	80	10%	-4%



Beam Details

MAC Allure Profile – Narrow



Beam width:

Beam luminous intensity formula:

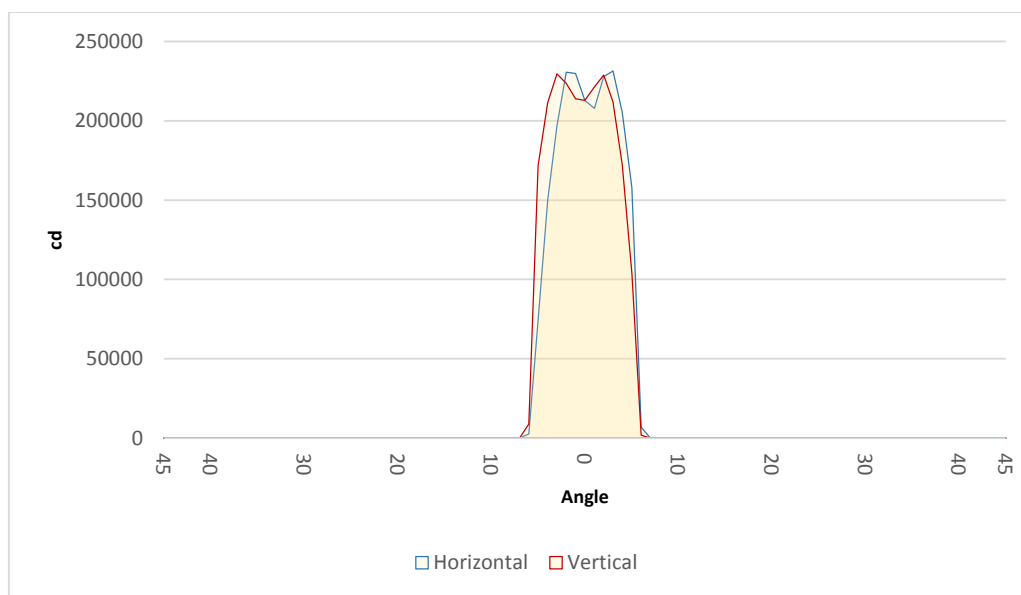
$$w = 0.2 * \text{distance}$$

$$\text{lux} = 212878 / (\text{distance}^2) \text{ (where distance is in meters)}$$

$$\text{fc} = 212878 / (\text{distance}^2) \text{ (where distance is in feet)}$$

Beam illuminance from 1-20m

1m	2m	3m	4m	5m	6m	7m	8m	9m	10m	11m	12m	13m	14m	15m	16m	17m	18m	19m	20m
3.3ft	6.6ft	9.8ft	13.1ft	16.4ft	19.7ft	23ft	26.2ft	29.5ft	32.8ft	36.1ft	39.4ft	42.7ft	45.9ft	49.2ft	52.5ft	55.8ft	59.1ft	62.3ft	65.6ft
212878lx	53219lx	23653lx	13305lx	8515lx	5913lx	4344lx	3326lx	2628lx	2129lx	1759lx	1478lx	1260lx	1086lx	946lx	832lx	737lx	657lx	590lx	532lx
19777fc	4944.2fc	2197.4fc	1236.1fc	791.1fc	549.4fc	403.6fc	309fc	244.2fc	197.8fc	163.4fc	137.3fc	117fc	100.9fc	87.9fc	77.3fc	68.4fc	61fc	54.8fc	49.4fc



Beam angle 50%	Field angle 10%	Cutoff angle 3%
10°	11.7°	12.2°